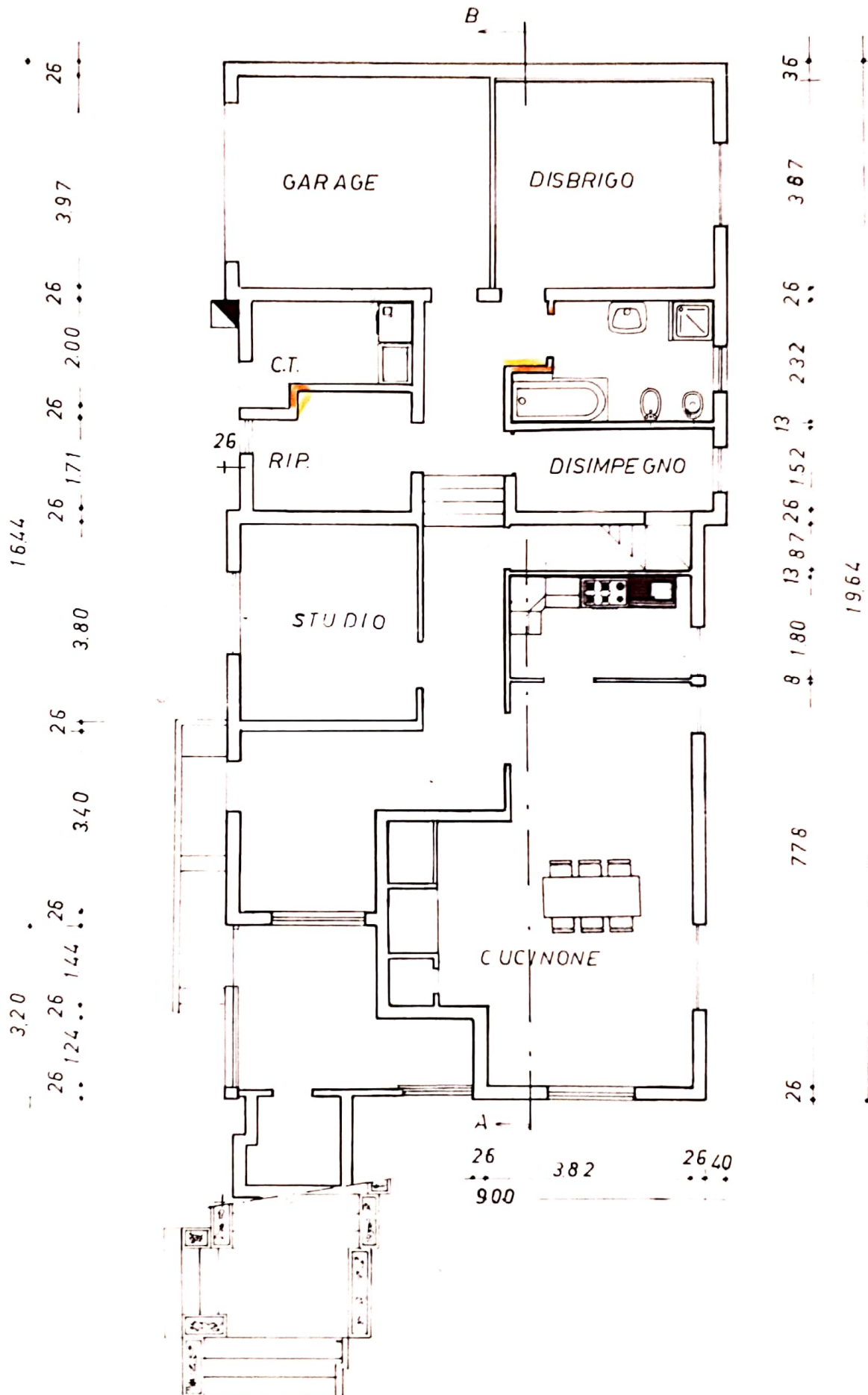
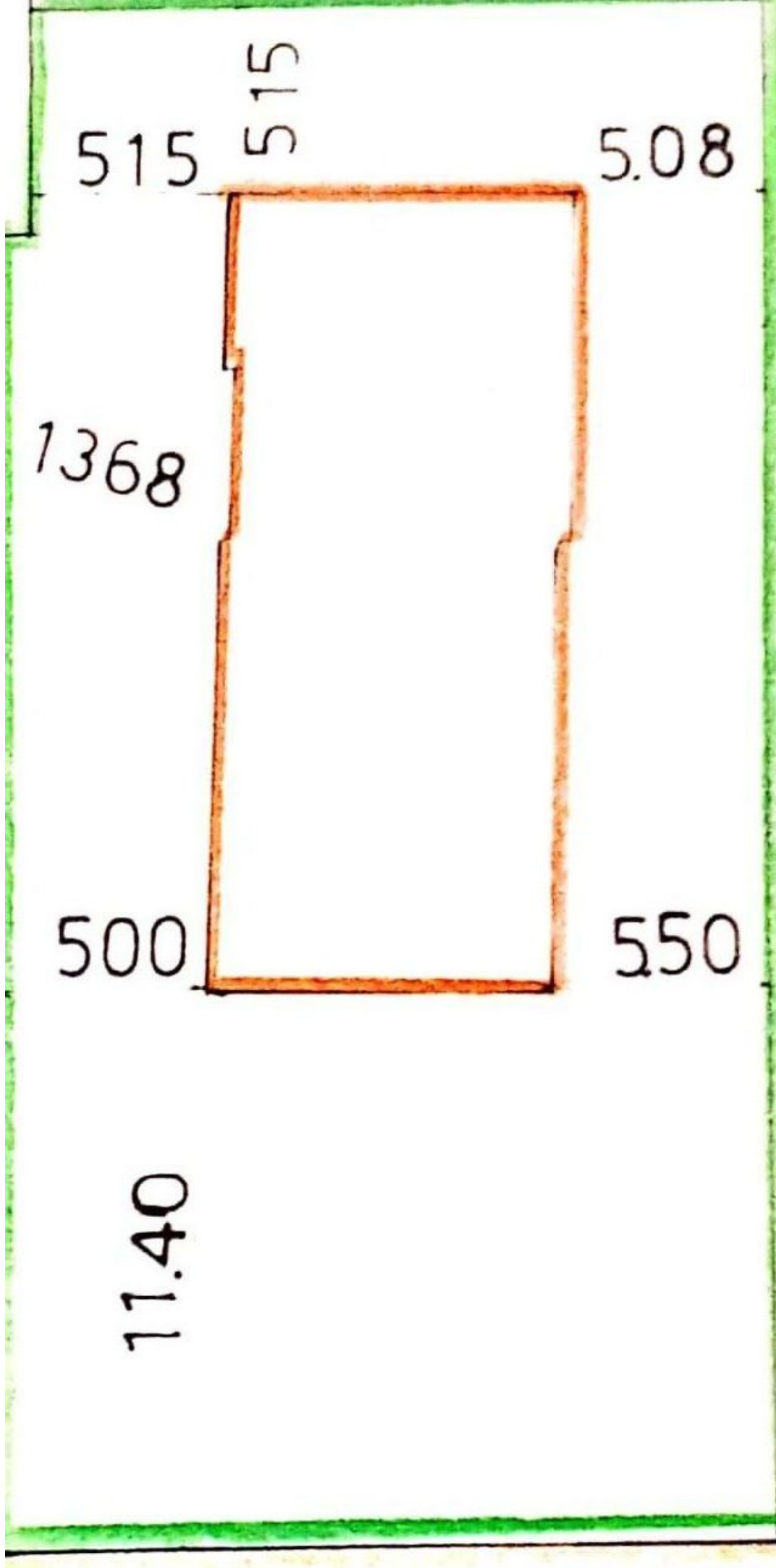


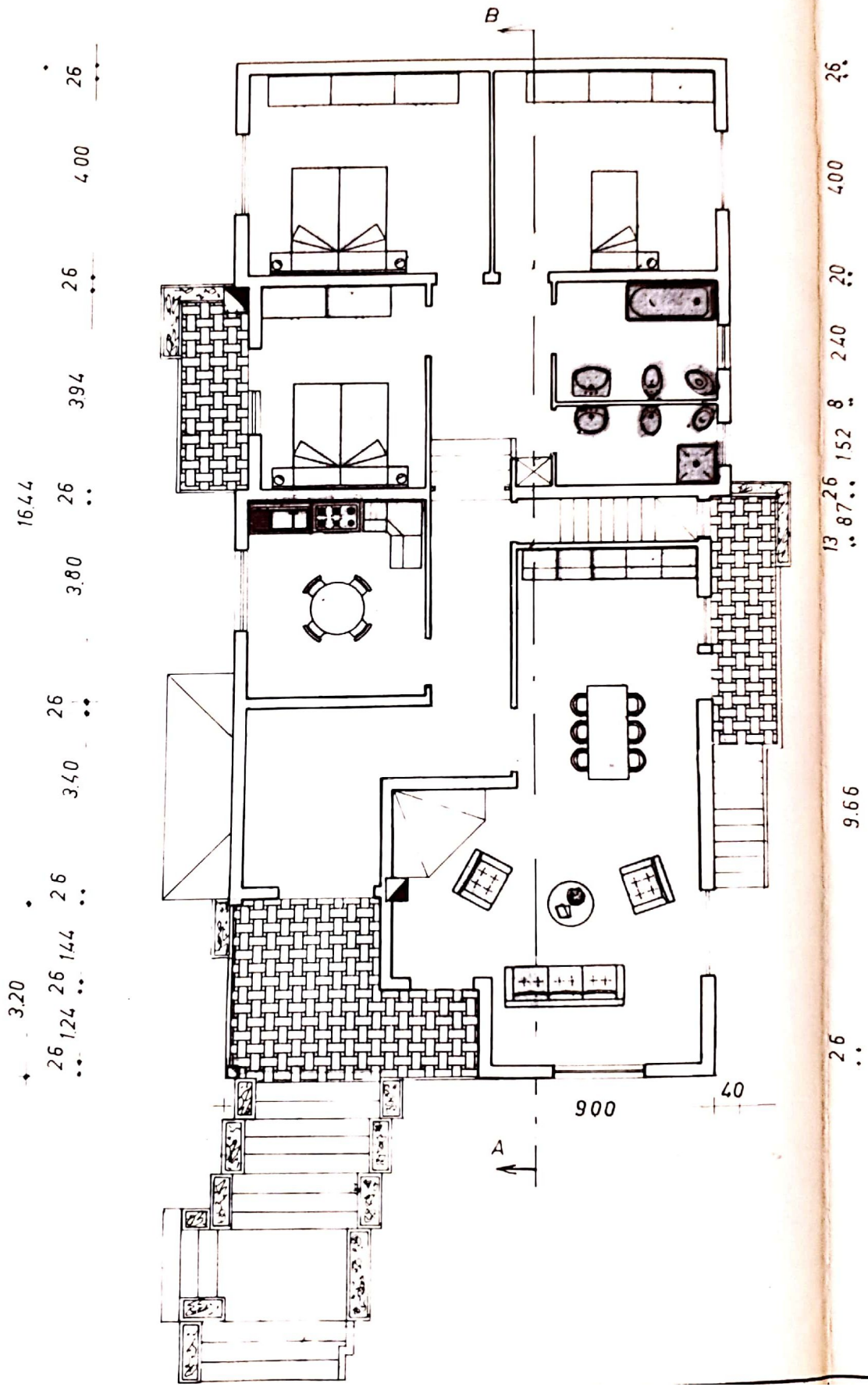
# PIANTA PIANO TERRA

- COSTRUZIONE
- DEMOLIZIONE





PIANTA PIANO PRIMO



1964

## QUADRO SUPERFICI E VOLUMI

$$\textcircled{1} 940 \times 452 = \text{MQ. } 42.49 \times 5.75 = \text{MC. } 244.32$$

$$\textcircled{2} 914 \times 420 = \text{MQ. } 38.38 \times 5.75 = \text{MC. } 220.68$$

$$\textcircled{3} 026 \times 026 = \text{MQ. } 0.06 \times 5.75 = \text{MC. } 0.34$$

$$\textcircled{4} 900 \times 1092 = \text{MQ. } 98.28 \times 490 = \text{MC. } 481.57$$

---

MQ. 179.21

---

MC. 946.91

